

Zero Energy State – Locking and Tagging Program

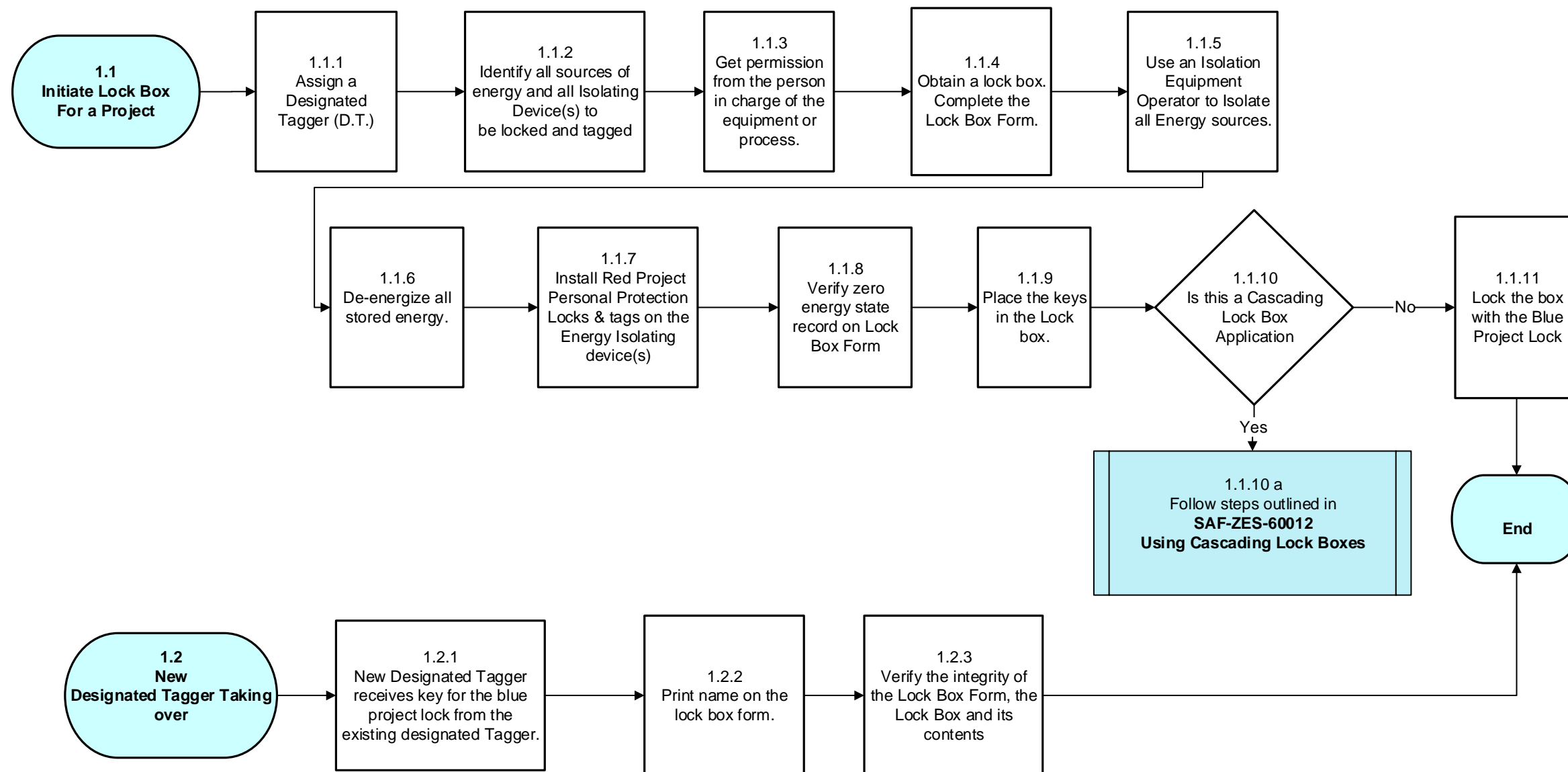
Quick Reference - Flowcharts

Page	Flowchart
#1	Designated Tagger Installing Protection with a Lock Box
#2	Tagger Installing Personal Protection
#3	Tagger Removing Personal Protection
#4	Designated Tagger Removing Protection with a Lock Box
#5	Remote Tagging – Installing Personal Protection
#6	Remote Tagging – Removing Personal Protection
#7	Status Tags – Installing and Removing
#8	Removal of Red or Blue Locks if the Person is not on the Property
#9	Personal Protection on Running Mobile Equipment
#10	Requesting a Plant Specific Locking and Tagging Variance
#11	Procedure to Make Changes to the Program
#12	Using Cascading Lock Boxes

For training on ZES processes contact your Learning & Development Representative.

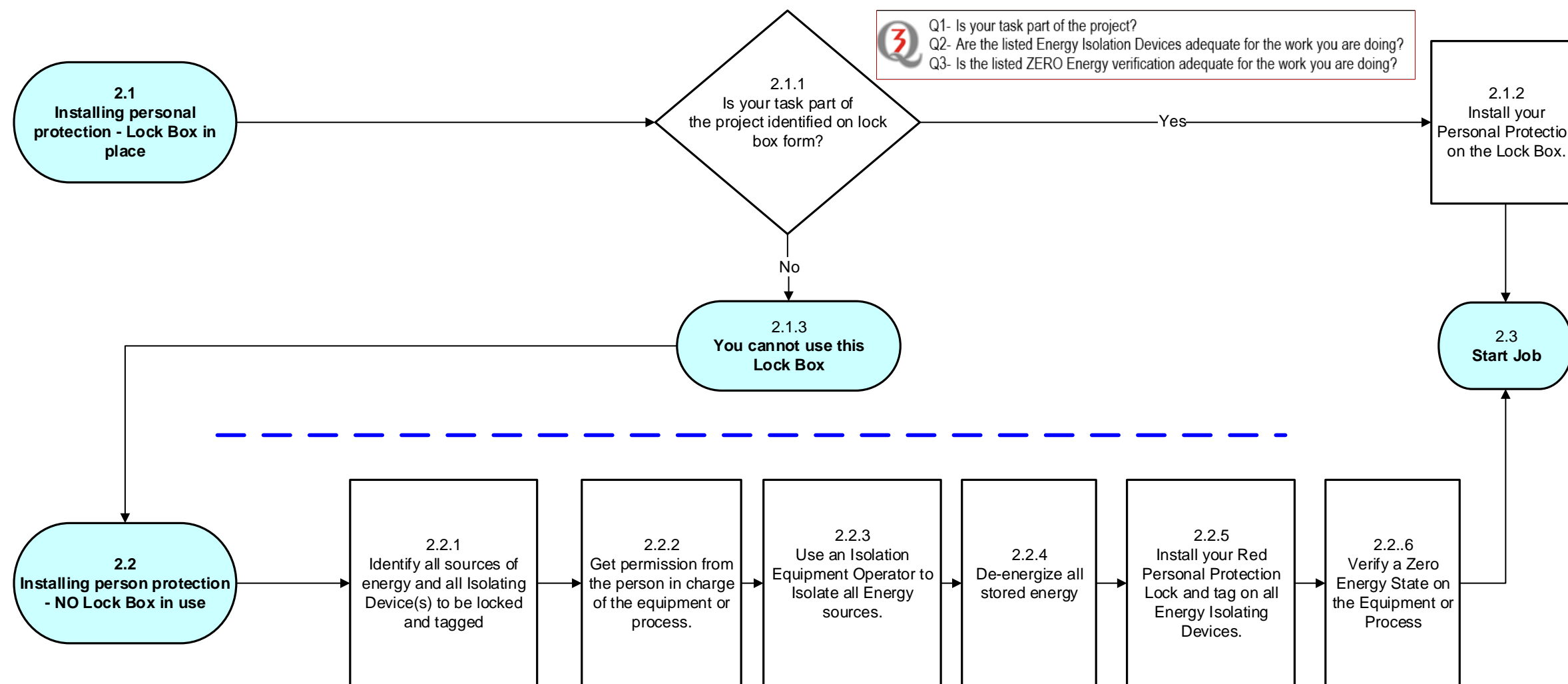
For assistance with any of the ZES processes/forms contact Ontario, Safety, Central Services.

Designated Tagger Installing Protection with a Lock Box ZES Flowchart #1



For further details on this process refer to Maintenance Standard Procedure: **SAF-ZES-60001**

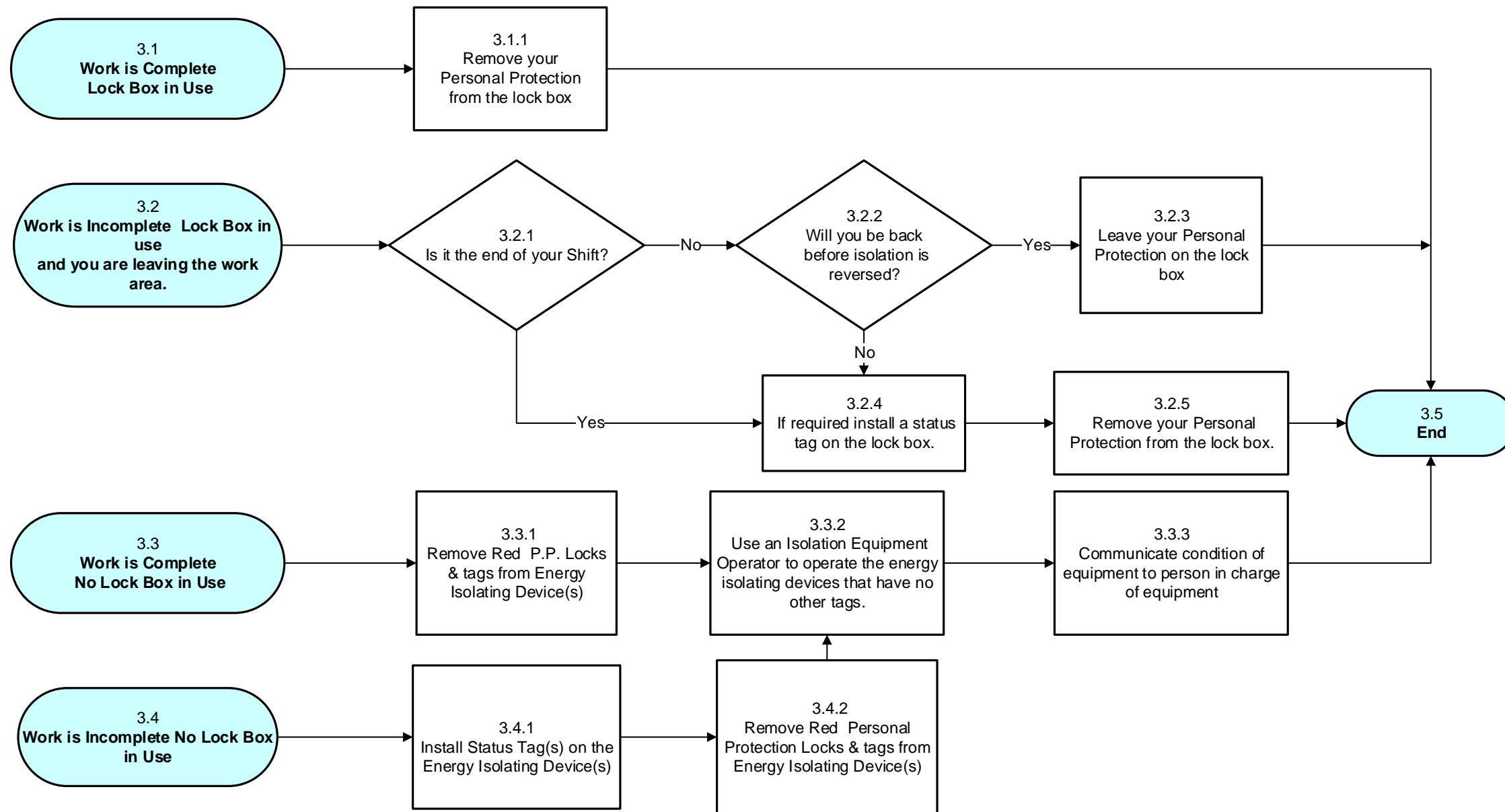
Tagger Installing Personal Protection ZES Flowchart #2



For further details on this process refer: **SAF-ZES-60002**

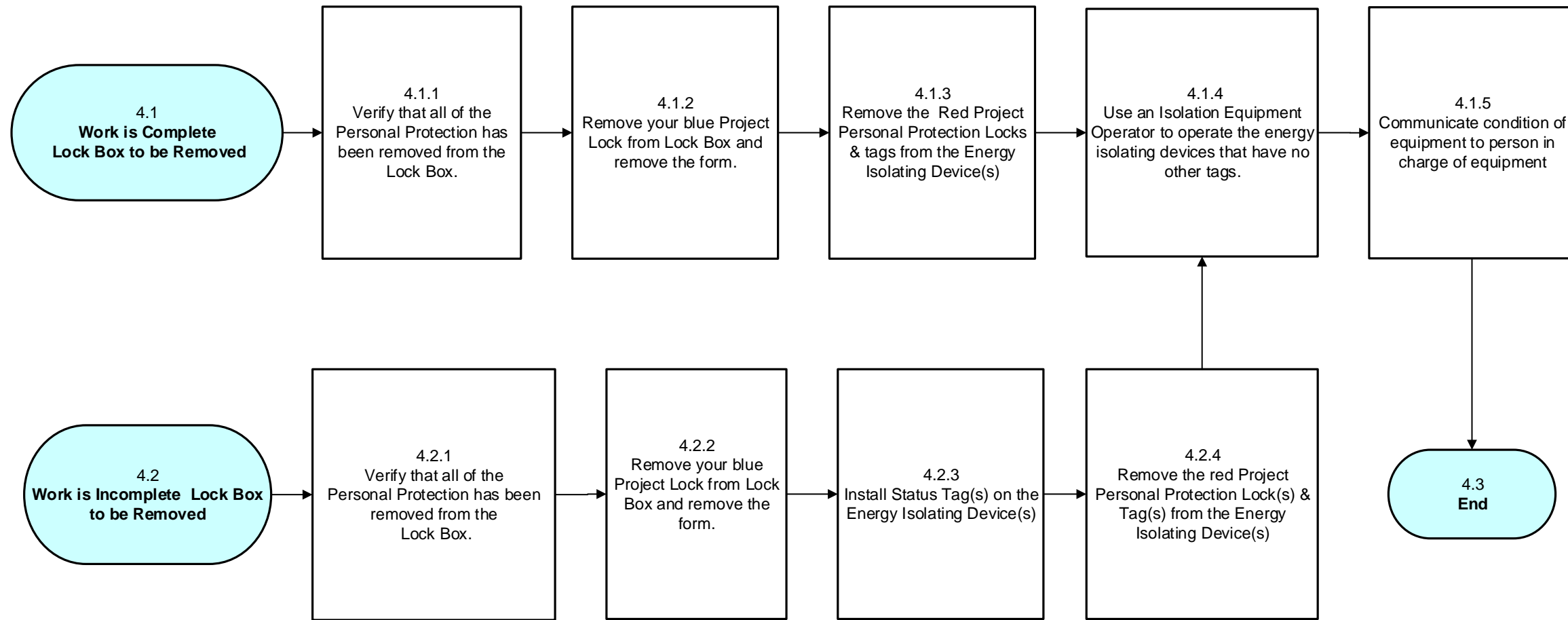
<http://extportal.vale.com/maint/sud/index.html>

Tagger Removing Personal Protection ZES Flowchart #3



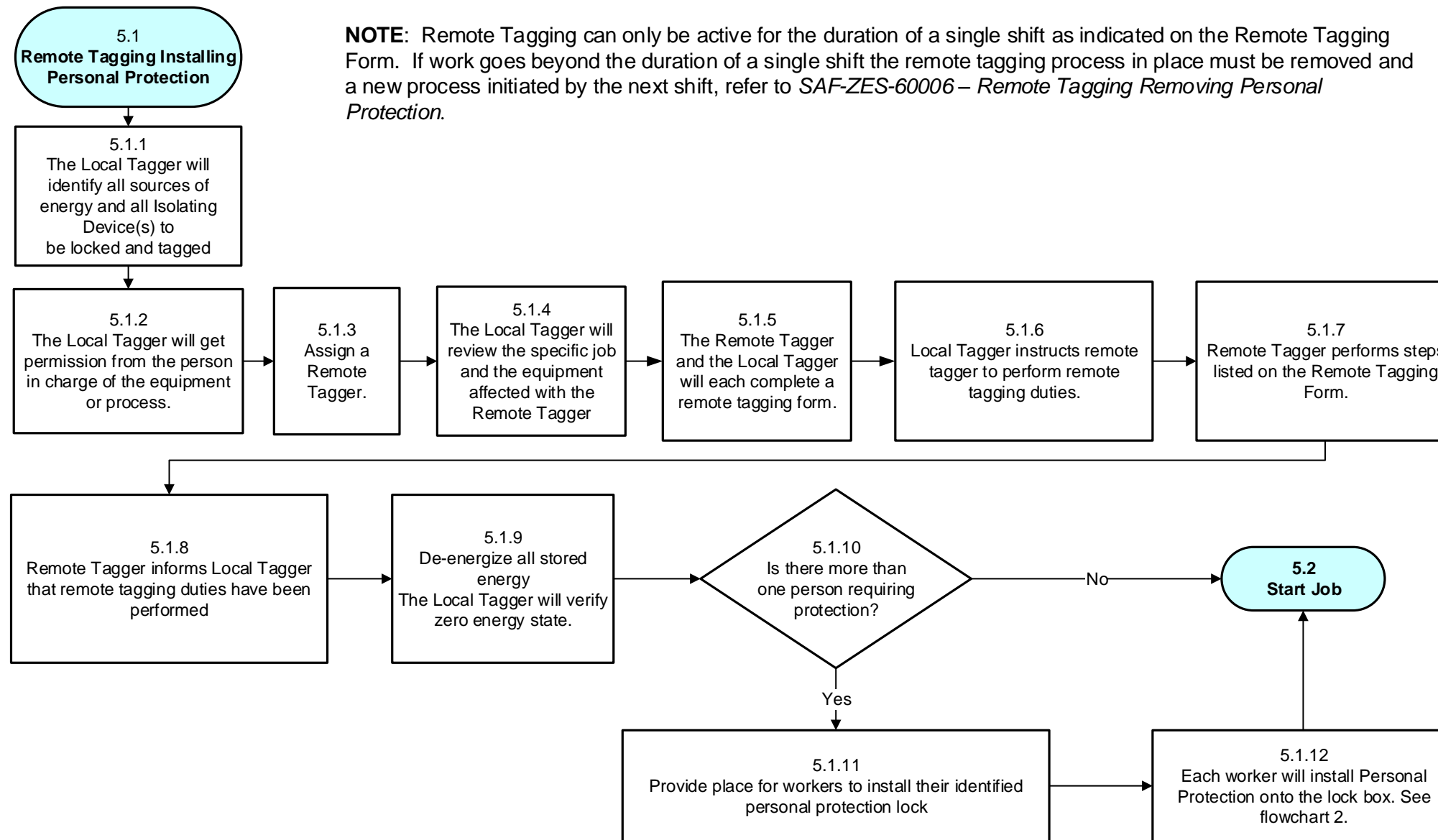
For further details on this process refer: **SAF-ZES-60003**
<http://extportal.vale.com/maint/sud/index.html>

Designated Tagger Removing Protection with a Lock Box ZES Flowchart #4



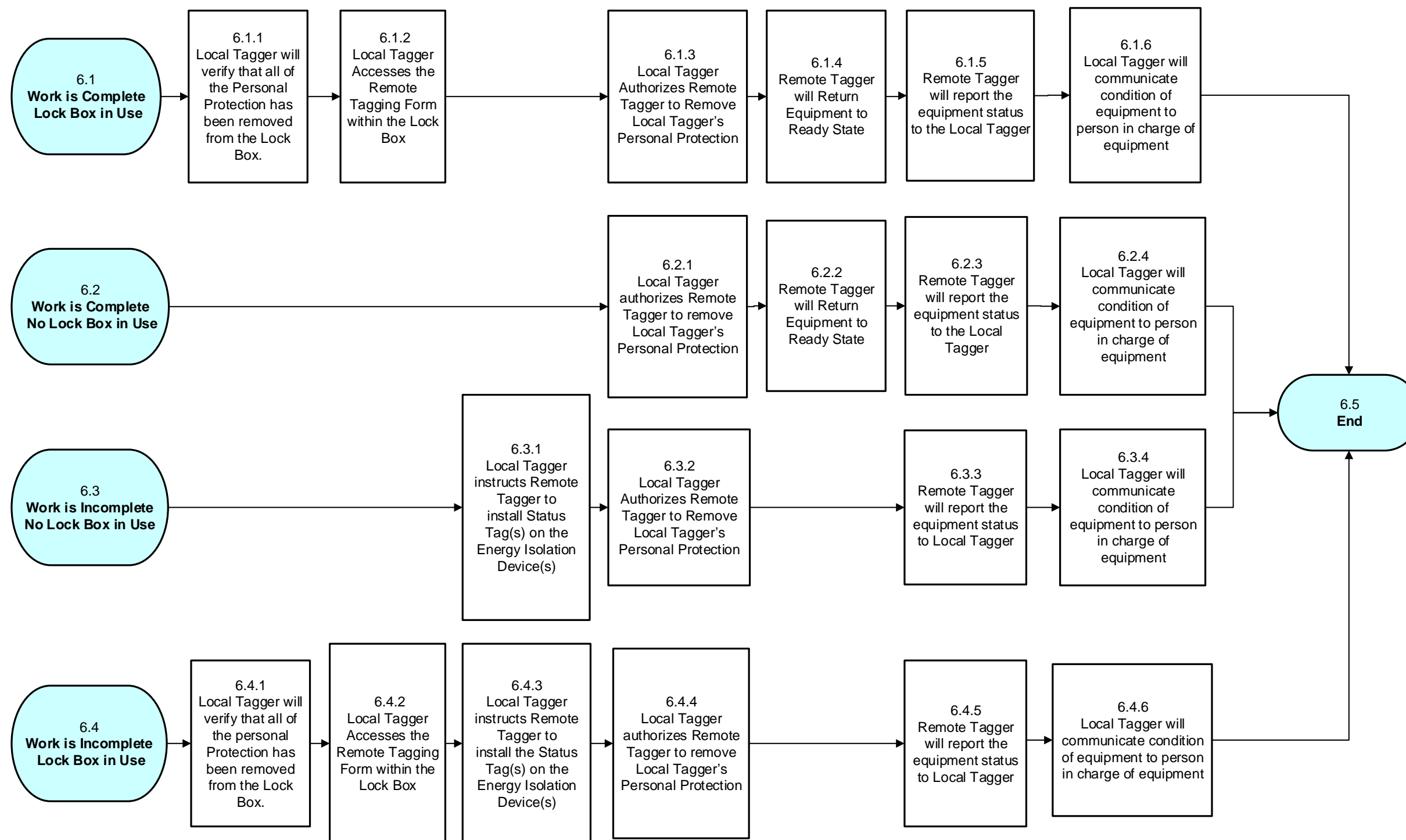
For further details on this process refer: **SAF-ZES-60004**
<http://extportal.vale.com/maint/sud/index.html>

Remote Tagging Installing Personal Protection ZES Flowchart #5



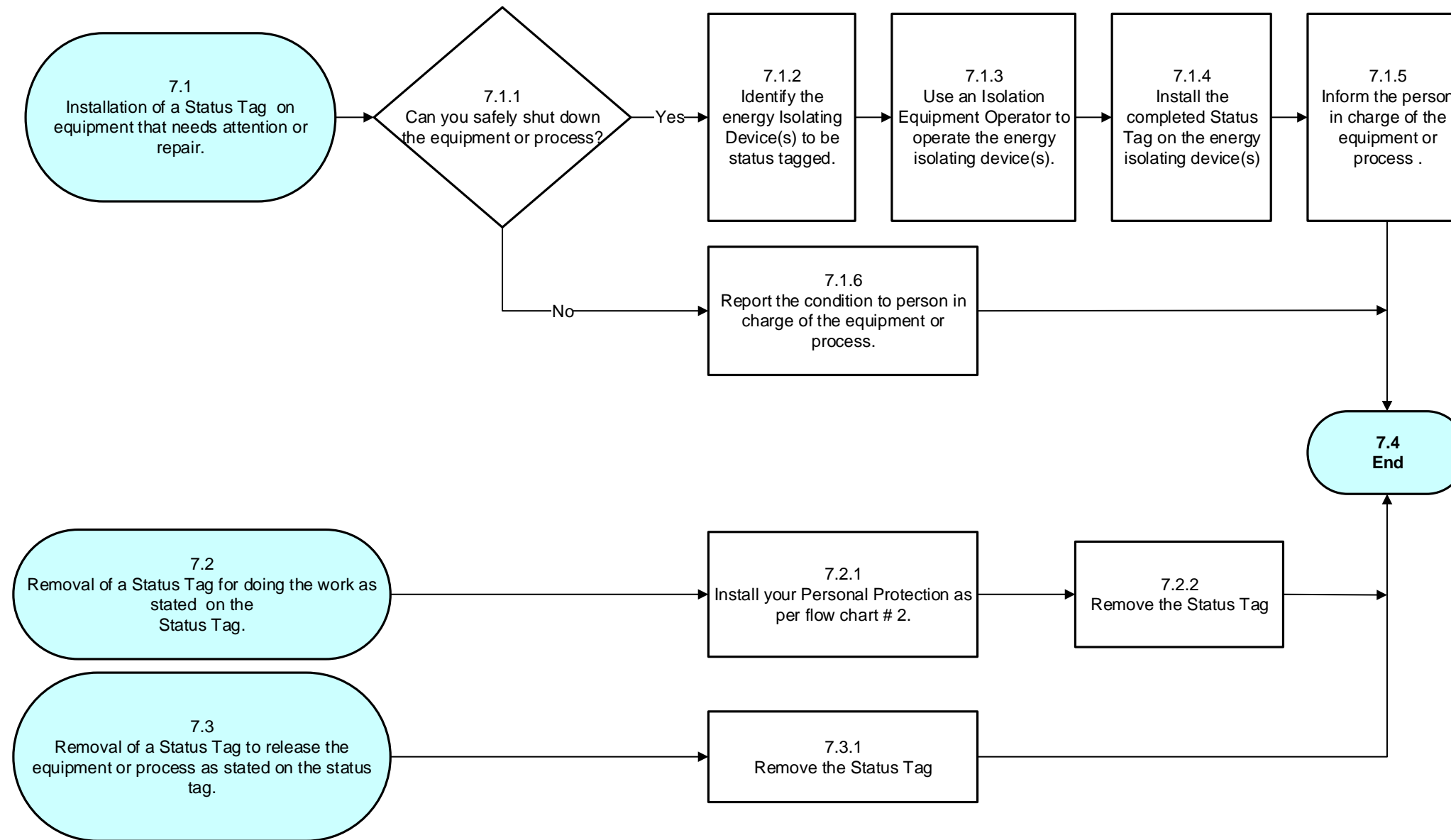
For further details on this process refer: **SAF-ZES-60005**
<http://extportal.vale.com/maint/sud/index.html>

Remote Tagging Removing Personal Protection ZES Flowchart #6



For further details on this process refer: **SAF-ZES-60006**
<http://extportal.vale.com/maint/sud/index.html>

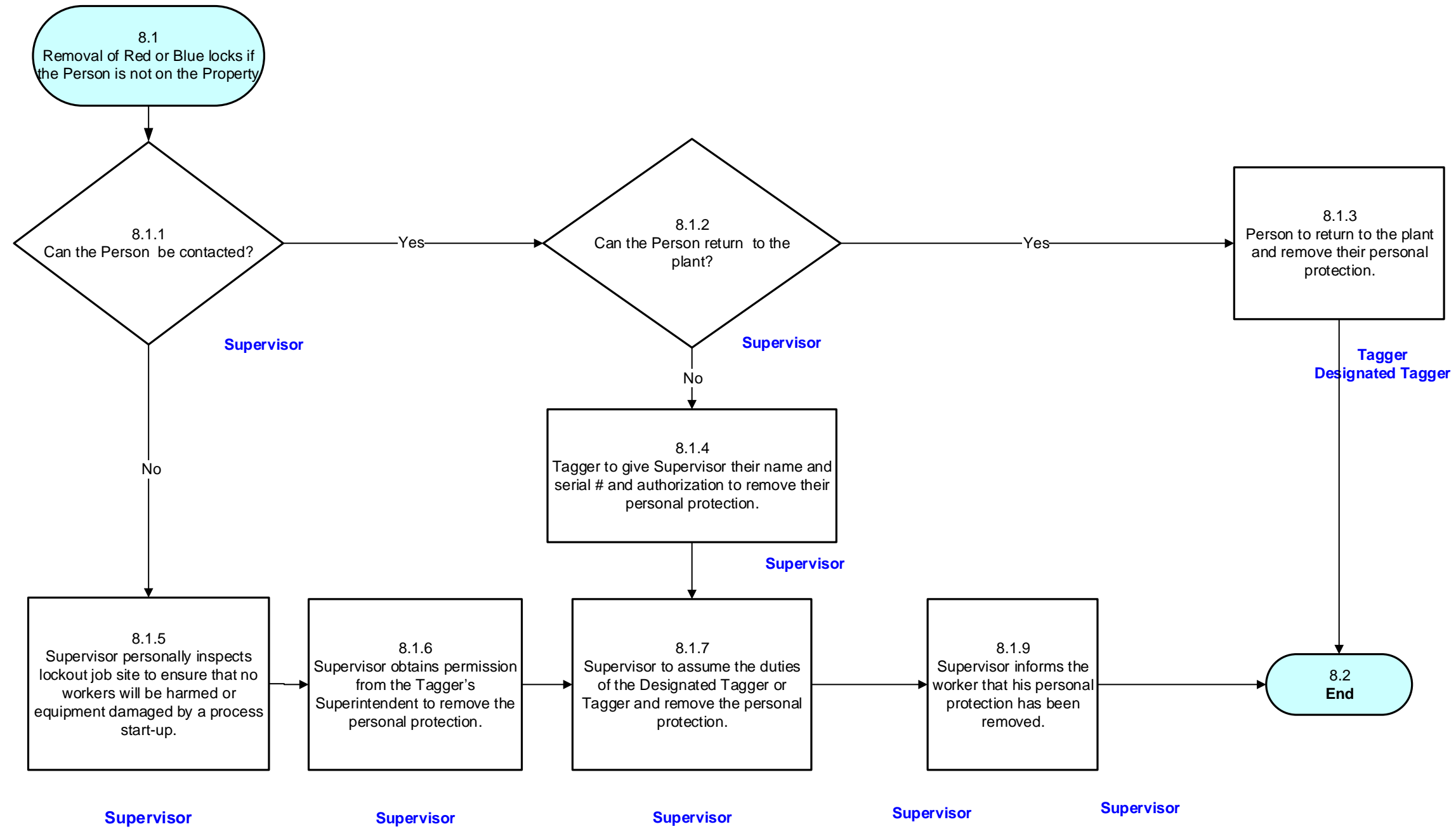
Status Tags, Installing and Removing ZES Flowchart #7



For further details on this process refer: **SAF-ZES-60007**

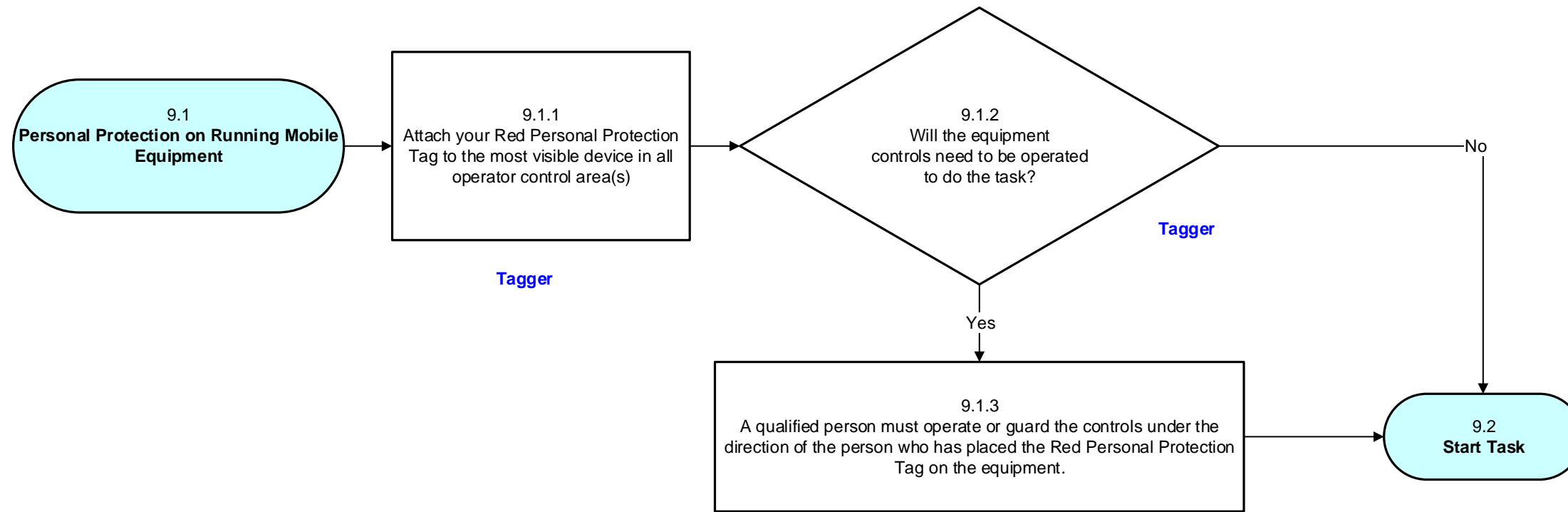
<http://extportal.vale.com/maint/sud/index.html>

Removal of Red or Blue locks if the Person is not on the Property ZES Flowchart #8



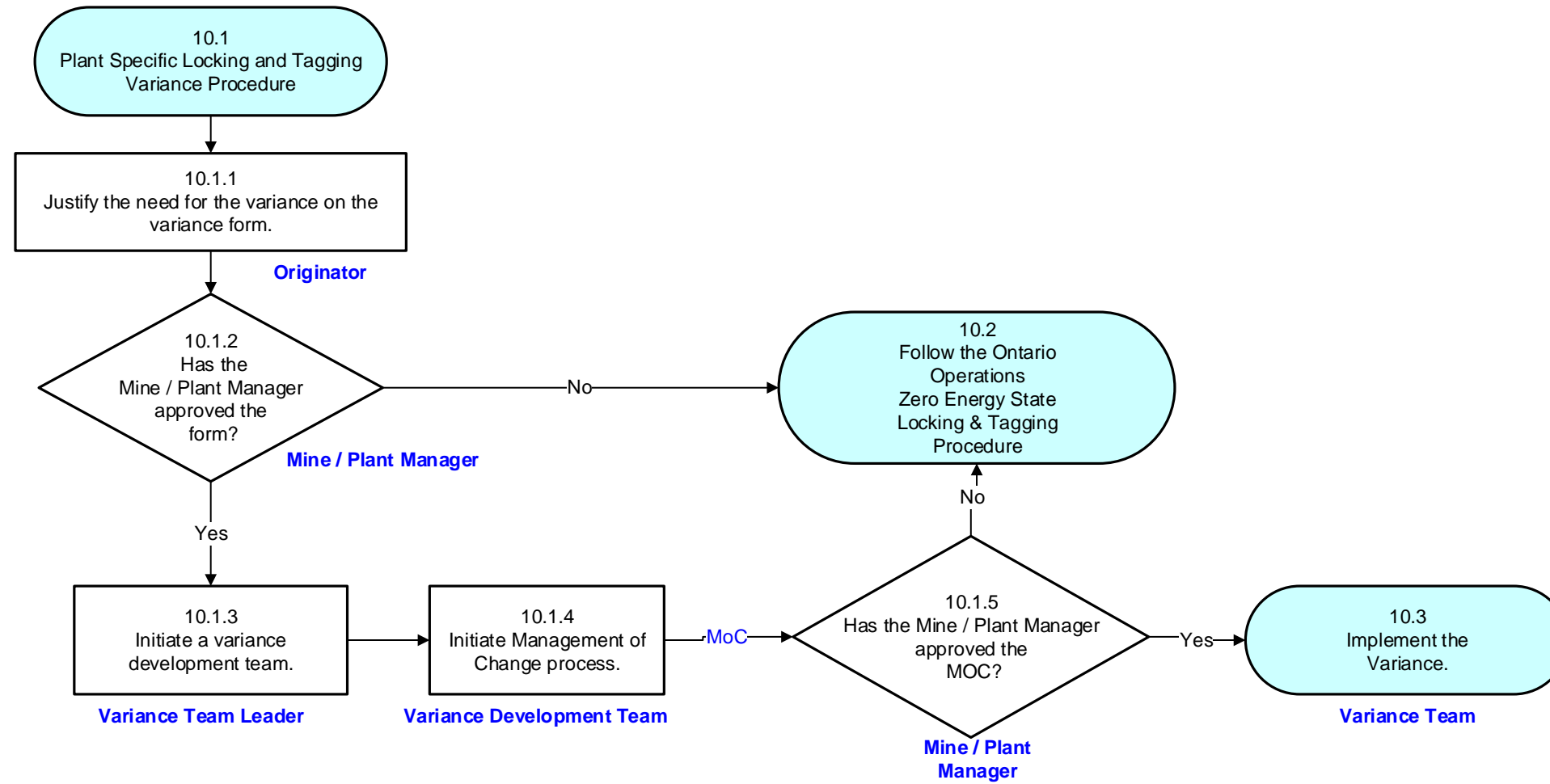
For further details on this process refer: **SAF-ZES-60008**
<http://extportal.vale.com/maint/sud/index.html>

Personal Protection on Running Mobile Equipment ZES Flowchart #9



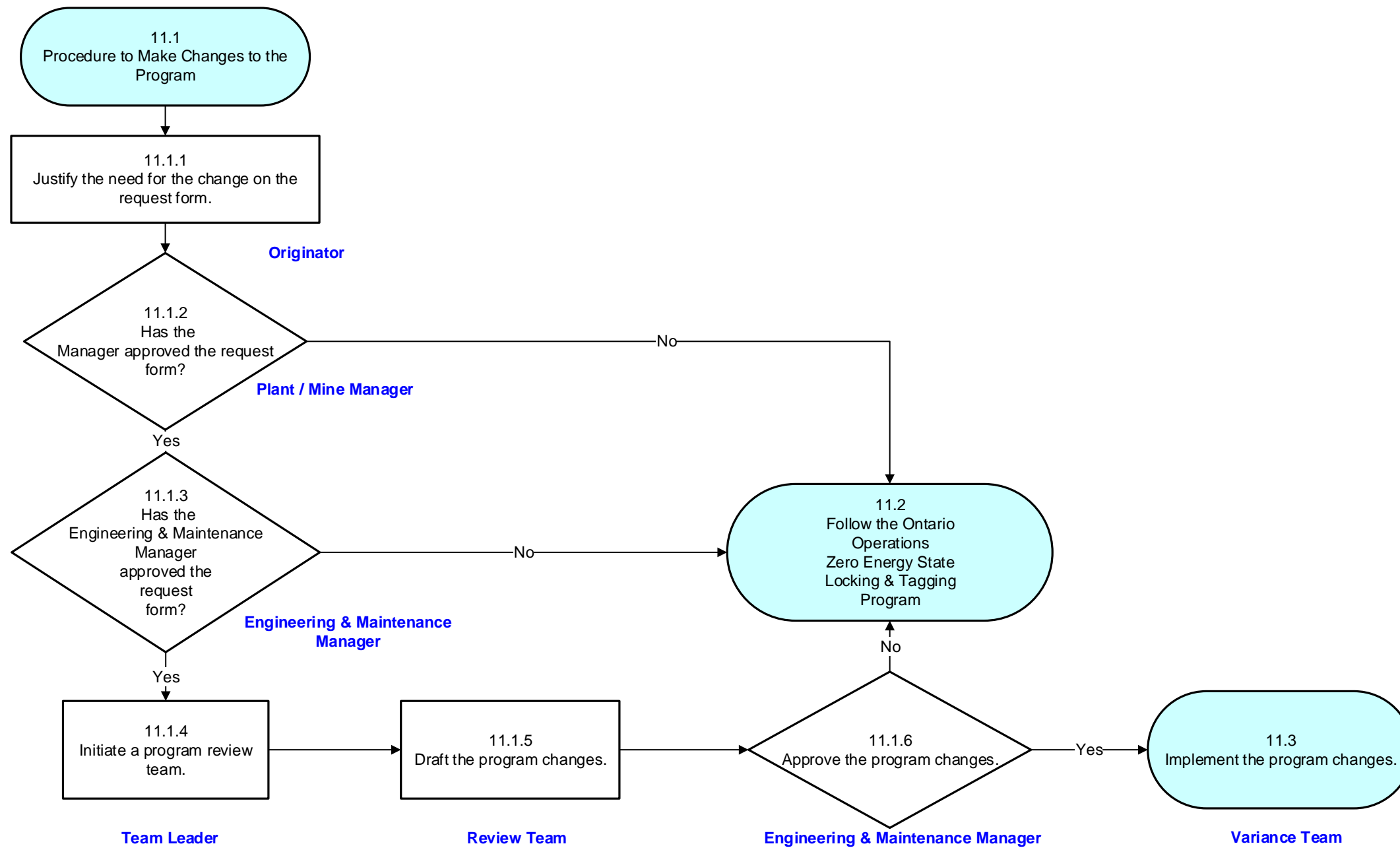
For further details on this process refer: **SAF-ZES-60009**
<http://extportal.vale.com/maint/sud/index.html>

Requesting a Plant Specific Locking and Tagging Variance ZES Flowchart #10



For further details on this process refer: **SAF-ZES-60010**
<http://extportal.vale.com/maint/sud/index.html>

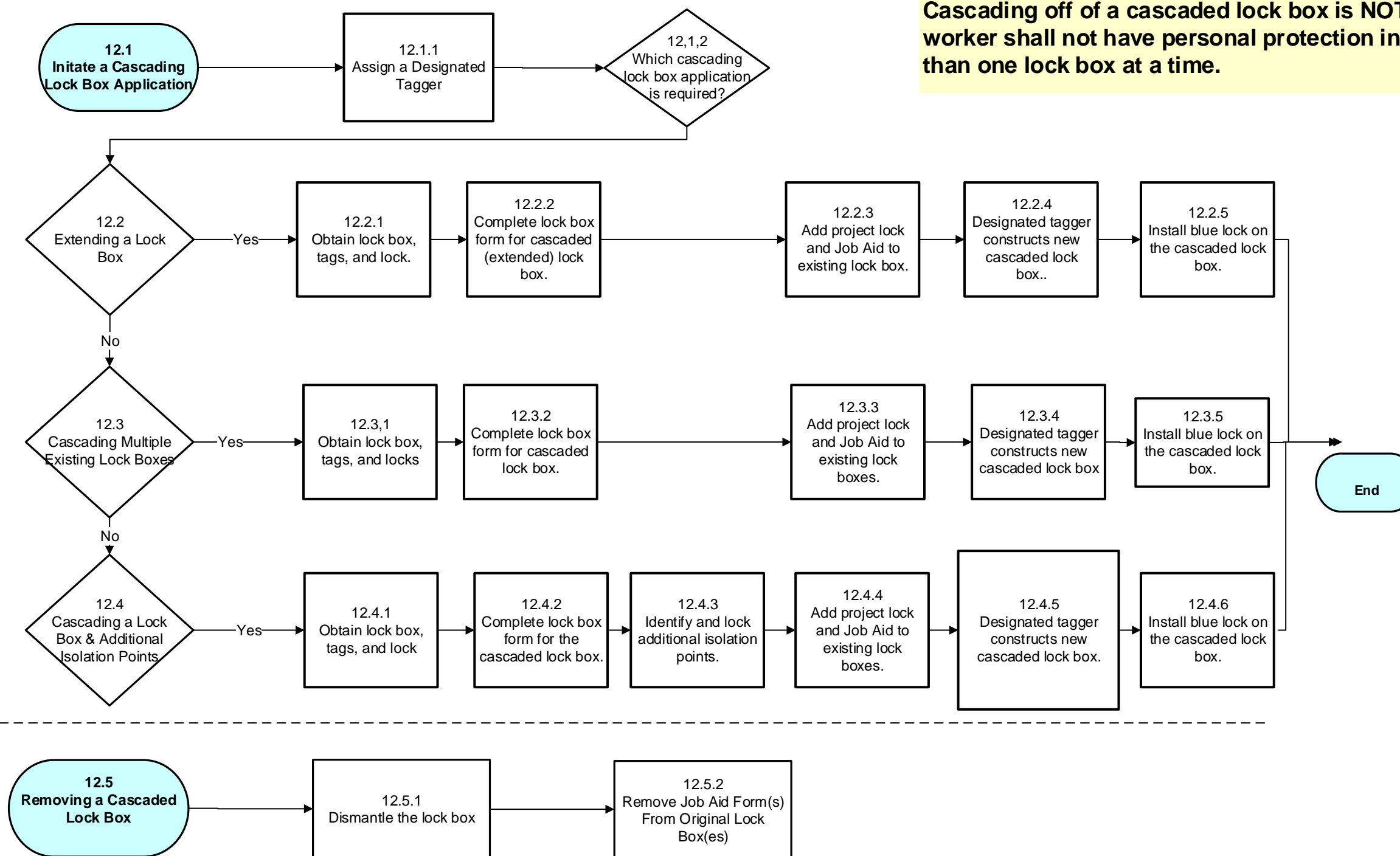
Procedure to Make Changes to the Program ZES Flowchart #11



For further details on this process refer: **SAF-ZES-60011**
<http://extportal.vale.com/maint/sud/index.html>

Using Cascading Lock Boxes ZES Flowchart #12

IMPORTANT:
You can **ONLY** cascade off of an original lock box.
Cascading off of a cascaded lock box is **NOT** permitted. A worker shall not have personal protection installed on more than one lock box at a time.



For further details on this process refer: **SAF-ZES-60012**
<http://extportal.vale.com/maint/sud/index.html>